

From fully integrated to easily connected

CAM solutions for your workflow



CAM solutions for your workflow

Customized solutions, completely tailored to your individual needs, also drive us in the field of Computer-Aided-Manufacturing (CAM). We are convinced that successful processes in the laboratory is not merely limited to the performance of the products used, but also on their linking via digital workflows.

Ceramill Match 2

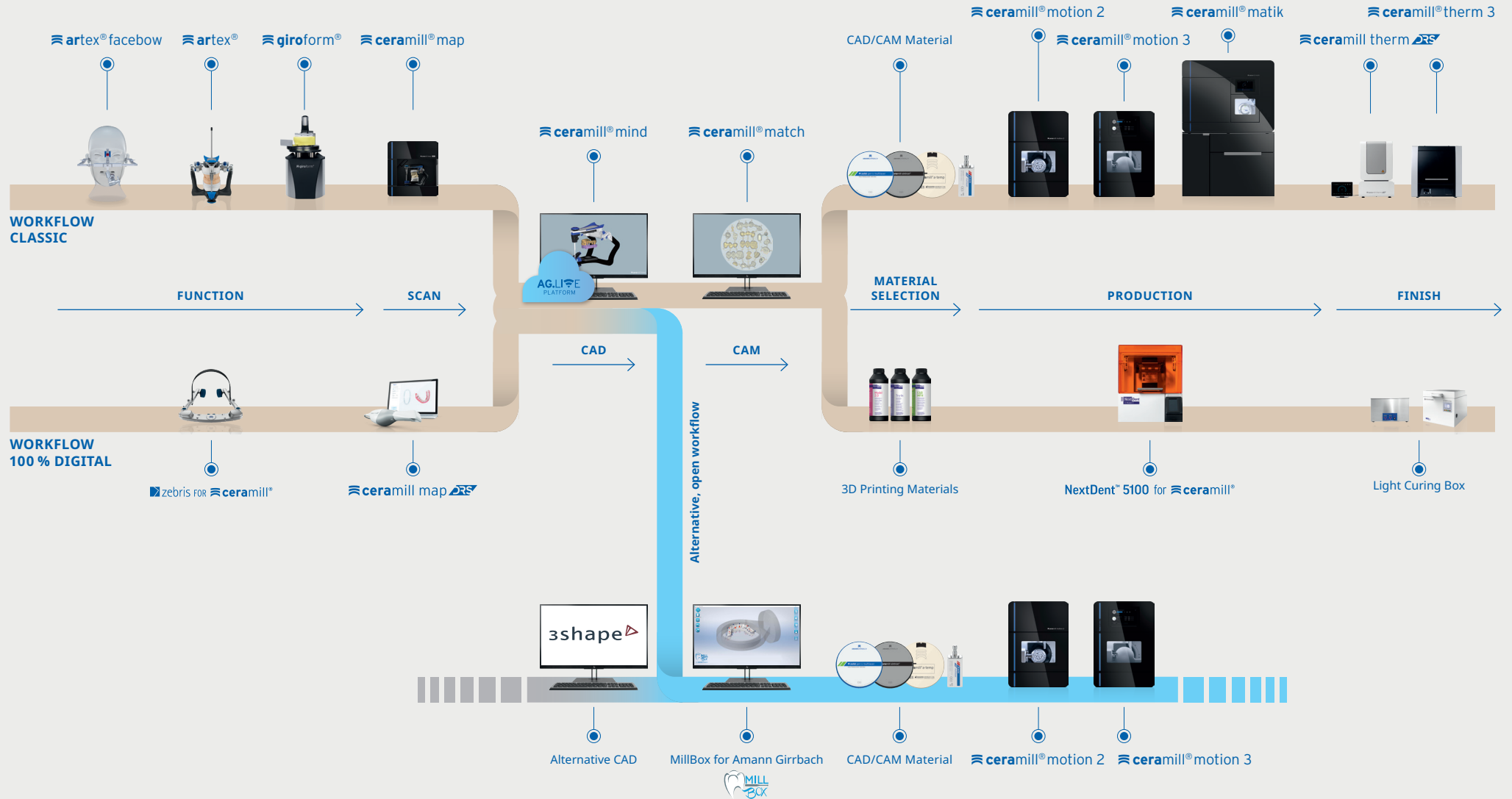
We have always attached great importance to offering safe, validated processes in which all system components are optimally matched to each other to be able to guarantee outstanding results. This is what our proven and fully integrated Ceramill Match 2 CAM solution stands for, and which offers users maximum process certainty.

MillBox for Amann Girrbach

If you wish to integrate our machines into your existing CAM setup, we can accomplish this through the cooperation and flawless integration with MillBox for Amann Girrbach – the matching solution outside the Amann Girrbach workflow.



Amann Girrbach workflow third-party connection



Ceramill Match 2 CAM Software:

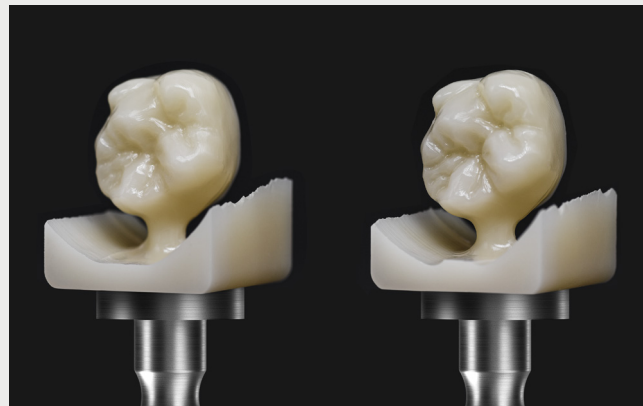
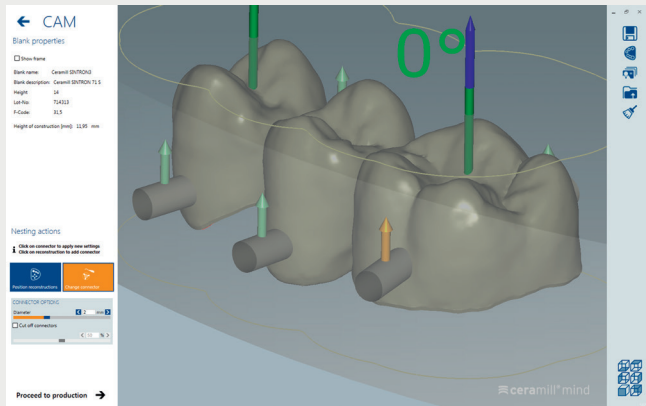
Simple, powerful and precise milling in the laboratory

The automatic and clearly arranged user interface of the Ceramill Match 2 CAM software, which is fully integrated into the Amann Girrbach workflow, ensures reliable and easy operation. CAM and milling know-how are not required for use. Irrespective of experience, users can easily and quickly create milling programs for the fabrication of a wide range of different indications. Sophisticated collision control (and avoidance) of Ceramill Match 2 ensures maximum process solutions.



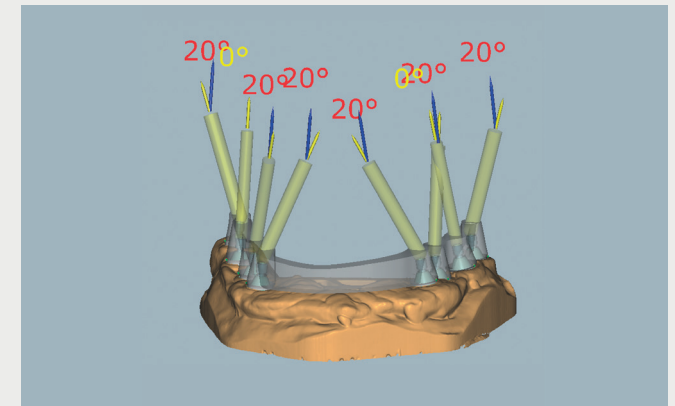
The advantages at a glance

- ✓ Seamless user experience for optimal convenience
- ✓ Working in the workflow: tested, validated and accurate
- ✓ Continuous further development for top performance
- ✓ Technological breakthroughs for unique solutions



Result with the Standard Strategy

Result with the new Diamond Finish Strategy



Angulated screw channels for titanium implant work

Convenient nesting

The intelligent nesting concept based on the Vita Classical shade guide and the easy positioning of the connectors on the designs make working with Ceramill Match 2 extremely simple.

Diamond Finish for composite blocs

To deliver unique, highly esthetic milling results in the field of composite fabrication, the Diamond Finish processing mode offers exclusive options for high surface quality and excellent esthetics.

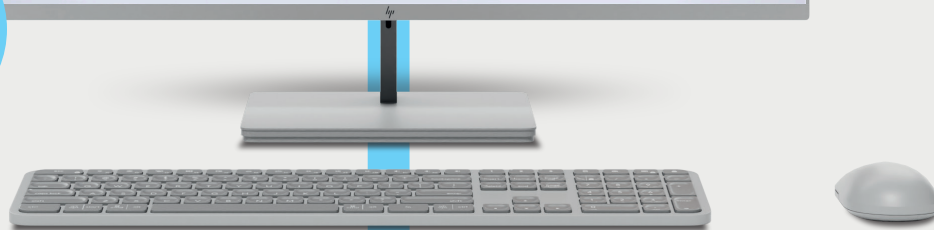
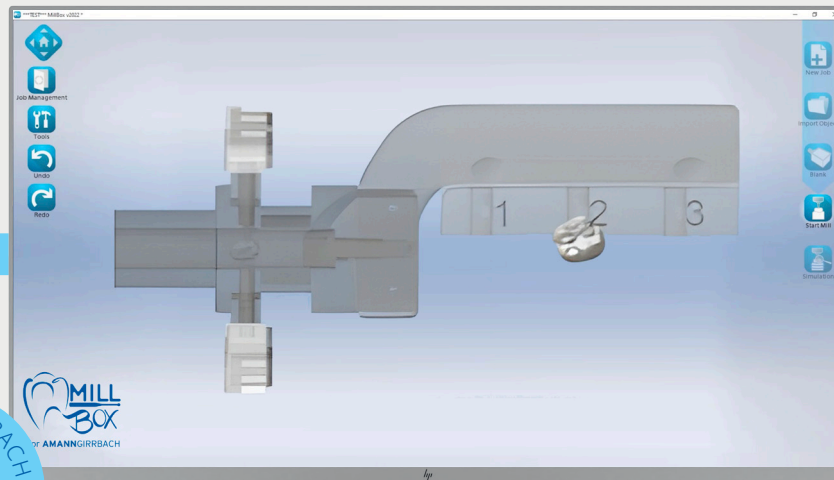
Angulated screw channels for titanium implant work

Ceramill Match 2 allows the design and fabrication of titanium implant restorations with angulated screw channels. This opens up a high degree of flexibility and maximum esthetics while at the same time ensuring a high level of accuracy due to the validated milling strategy.

Alternative CAM solution

MillBox for Amann Girrbach

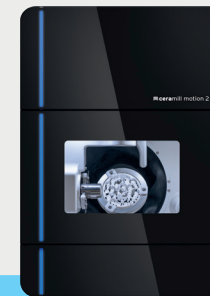
MillBox for Amann Girrbach combines the milling know-how and intuitive software interface of the MillBox CAM software with the high-performance Amann Girrbach milling machines, giving users with MillBox experience direct access to the Ceramill Motion 2 and Ceramill Motion 3. MillBox for Amann Girrbach enables a connection to your existing MillBox workflow and libraries and can be used immediately.



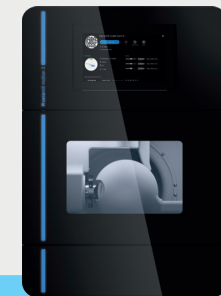
Alternative, open workflow

The advantages at a glance

- ✓ Maximum flexibility with import functionality
- ✓ Plug & Play through automatic part recognition
- ✓ Efficient working
- ✓ Intuitive user interface for high user convenience



ceramill® motion 2



ceramill® motion 3

Fully integrated. Digital. Open:

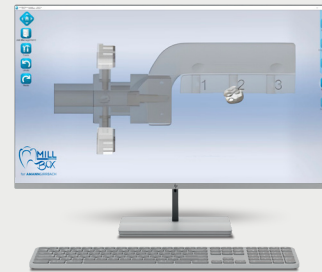
The Amann Girrbach CAM solutions

At Amann Girrbach you have the choice: benefit from all the advantages of the fully integrated Ceramill Match 2 CAM solution or combine your individual setup with our milling machines using MillBox for Amann Girrbach.



 **ceramill® match 2**

Designation	Art. No.
Ceramill Match 2 fully integrated into the Amann Girrbach workflow	179164




for **AMANNGIRRBACH**

Designation	Art. No.
MillBox for Amann Girrbach Eco	179800
MillBox for Amann Girrbach Standard	179801
MillBox for Amann Girrbach Expert	179802

About Amann Girschbach

As a pioneer in dental CAD/CAM technology, Amann Girschbach is one of the leading innovators and preferred full-service providers in digital dental prosthetics. With its high degree of expertise in development and commitment to customer orientation, the company offers sophisticated product and workflow solutions. In addition to innovative scanning and production solutions, in which software systems and the AG.Live cloud platform play a central role, the portfolio is rounded off by high-quality materials, a dedicated technical service with a global helpdesk as well as education and training courses. Its customers in around 100 countries are made up of dental practices, practice laboratories and dental laboratories. A high standard of quality and sustainability are decisive value creation criteria for Amann Girschbach, which is why the company has housed its entire development and production at its headquarters in Mäder, Austria. In addition, Amann Girschbach operates sales offices in Pforzheim (Germany), Verona (Italy), Jossigny (France), Charlotte (USA), Singapore (city), Curitiba (Brazil), Beijing (China) as well as cooperations in Kyoto (Japan) and Beirut (Lebanon).



We would be pleased to also inform you personally. Simply contact us!

On our website you will find further information about our locations and contact details so that you can reach us quickly.

bit.ly/ag-contact ↗

